



Laurence Carmichael, MD
VCOM Director of Student
Medical Education



Kathy Creekmore
VCOM Clinical Site Coordinator

Nine Generations of Caring
For our Community
And Counting

Helen Keller Hospital

Sheffield, Alabama

“The Shoals”

The four adjacent towns of Florence, Sheffield, Muscle Shoals and Tuscumbia are on the banks of the Tennessee River and make up what we call “The Shoals”. Because these towns are so intertwined, the residents enjoy a quality of life and a variety of activities usually only found in much larger metropolitan areas.

We are located just a few miles from Tennessee and Mississippi with access to three major airports.

The area offers much with changing of the seasons-from outdoor activities such as camping and water sports to museums and educational programs.



Services:

- 18 Bed ED, with dedicated trauma rooms
- Medical/Surgical ICU (12 beds)
- Progressive Care or Step-down Unit
- Acute Care Units
- Women’s Center with LDRP
- Pediatric Unit
- Inpt Surgery Unit & Outpt Pavilion
- Cardiac Cath-Lab
- Dedicated Women’s Imaging Center including Molecular Breast Imaging (MBI)
- Cardiac and Pulmonary Rehab
- Sleep Disorders Lab
- Acute Pain Management Center
- Wellcare Center
- Palliative Care

Hospital Information

Helen Keller Hospital is certified as Level 3 Trauma and Stroke Level 2 hospital. Helen Keller is the 1st hospital in Alabama to receive Joint Commission Disease Specific Certification in Sepsis.

Our mission is to provide compassionate, quality, cost effective healthcare services to the citizens of Northwest Alabama. We want to be the premier healthcare organization – the hospital that individuals choose for care, where physicians choose to practice and where healthcare workers choose to be employed.



Educational Features – Students are able to do rotations in:

3rd Year Students – Internal Medicine I & II, Family Medicine, General Surgery, OB/GYN, Geriatrics, Psychiatry and Pediatrics

4th Year Students – Anesthesiology, Emergency Medicine, Cardiology, Nephrology, Radiation, ENT, Oncology, Radiology, Urology, Orthopedics, IM/Hospitalist, Gastroenterology and ICU/Pulmonology

Attendance Requirements for Lectures and Seminars

Attendance is subject to the discretion of the preceptors while they are on rotation. OMM labs are required and students are expected to participate while on their rotations. Clinical case presentations are offered while on select rotations as well as 2 times a month with our DSME.

Housing Resources for Students – Not available on site

For housing resource options contact:
Kathy.creekmore@helenkeller.com

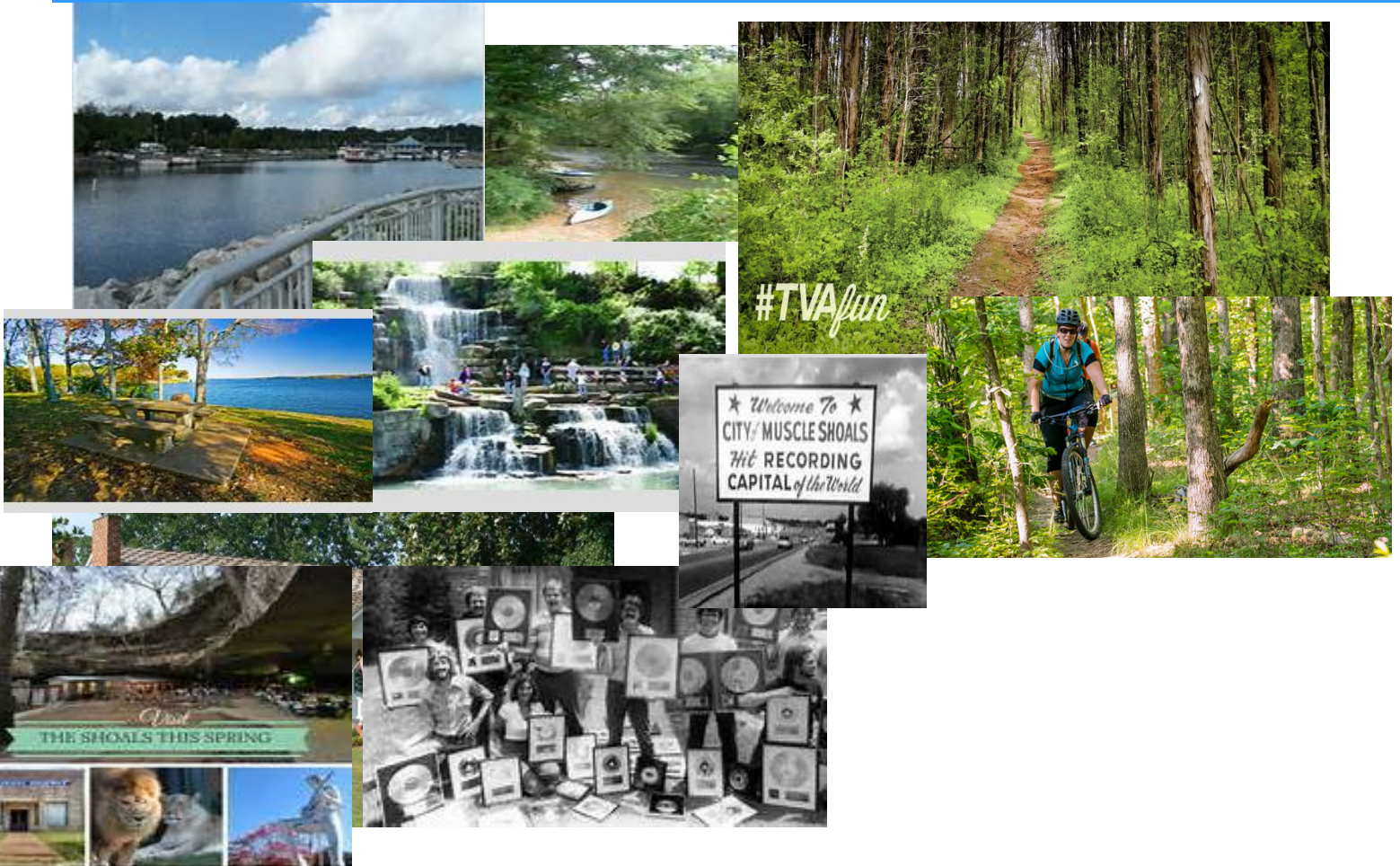
Residency Program

No Residency Program

Site Orientation

3rd Year Students are required to attend a one day hospital orientation, which will be one or two weeks prior to the start of rotations. This will include general hospital orientation, introduction to the computer system and scrub training. Students will also be given first period rotation information and their identification badges.

Things To Do



The Shoals area is full of historic places to see from the Birthplaces of Helen Keller and W.C. Handy the “Father of the Blues”, to the Muscle Shoals Sound and Fame Recording Studios.

The area also offers many opportunities for hiking, biking, caving, kayaking, fishing, swimming and all boating activities near and along the Tennessee River.

Annual Events

- Recall LaGrange. LaGrange College Site. ...
- Muscle Shoals Street Rod Festival. Spring Park. ...
- African Heritage Festival. Willie Green Center. ...
- Walking Tours & Trolley Tours. ...
- “The Miracle Worker” Alabama’s Official Outdoor Drama. ...
- Helen Keller Festival. ...
- Fourth of July Celebrations. ...
- Saddle Up for St. Jude.

Helpful Links

www.helenkeller.com

www.colbertcountytourism.org

northalabama.org

cityofmuscleshoals.com

www.alltrails.com/trail/us/alabama/tva-reservation-rock-pile