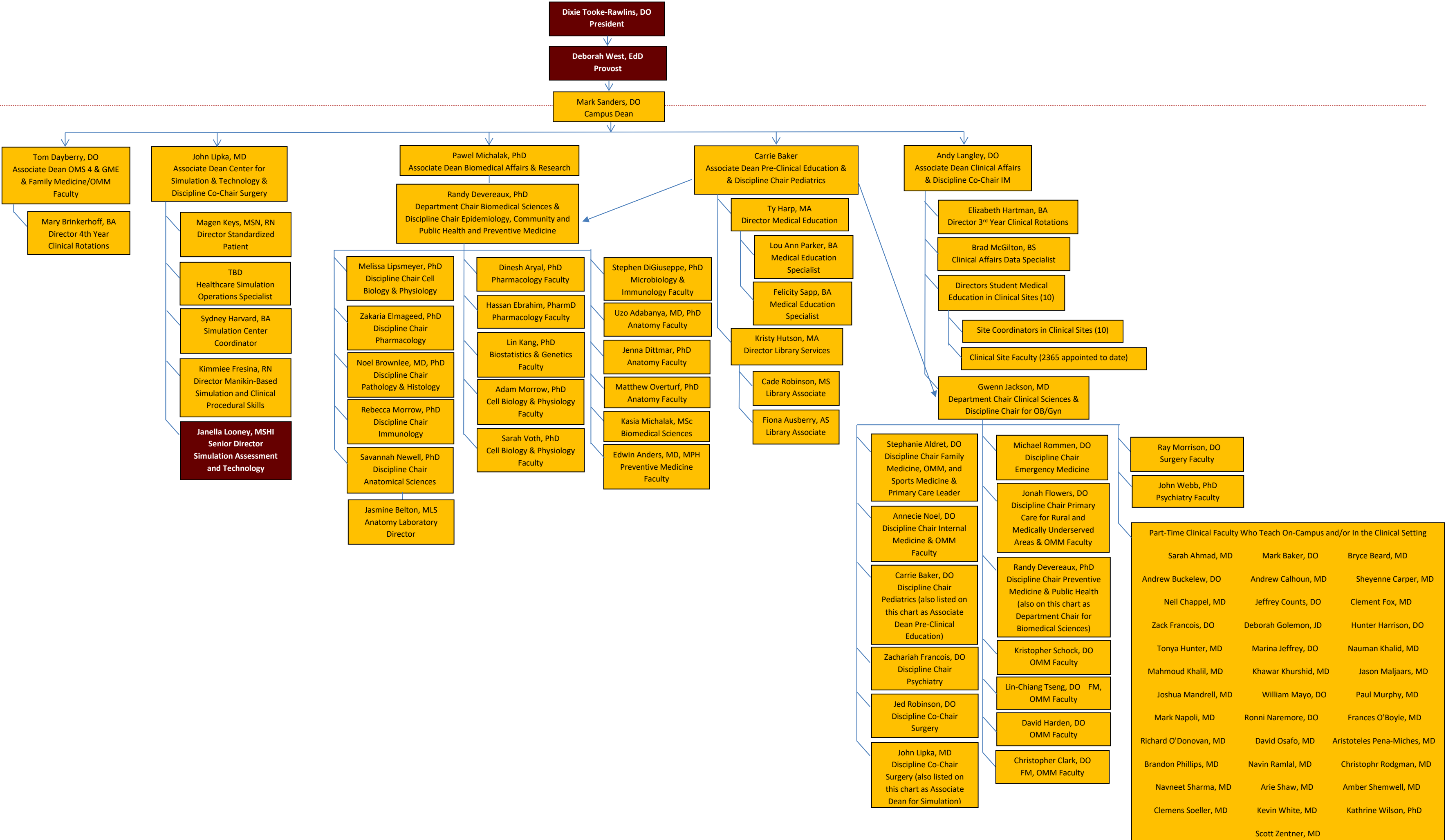


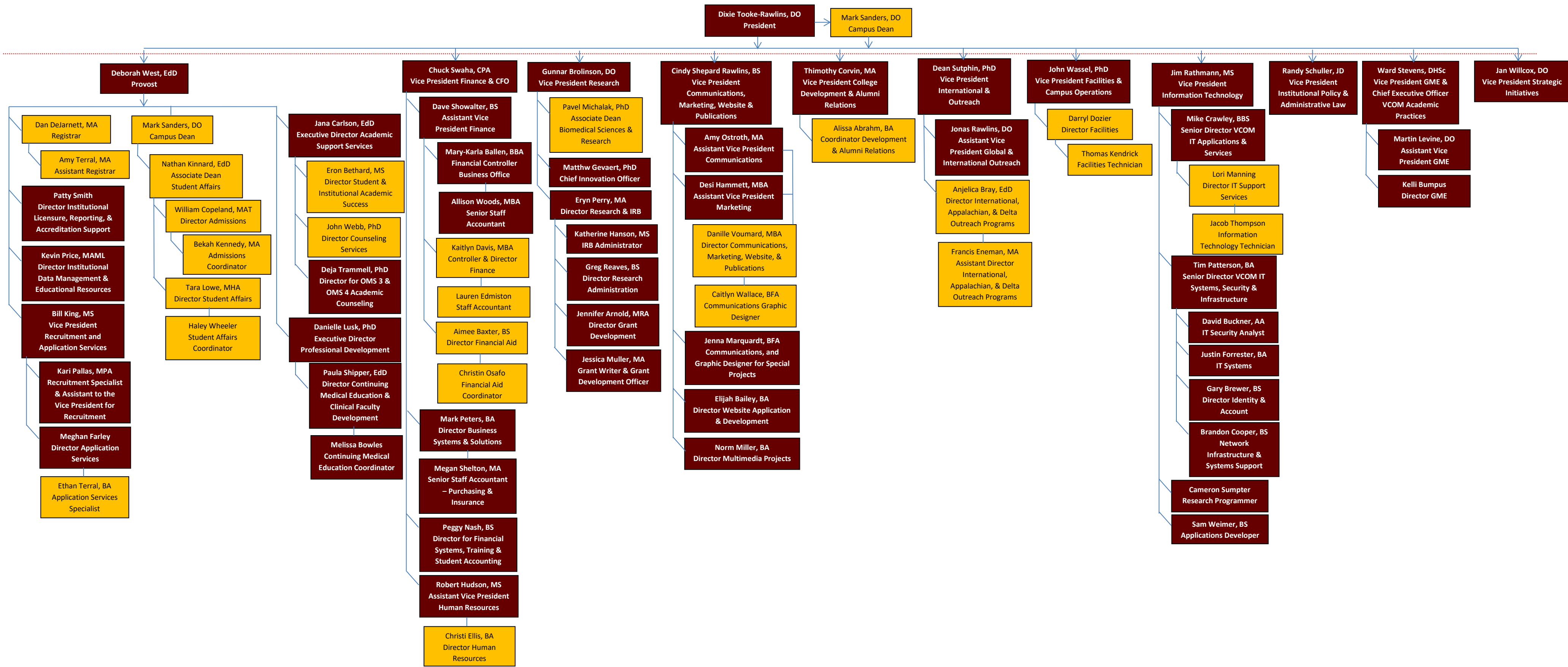
EDWARD VIA COLLEGE OF OSTEOPATHIC MEDICINE

Louisiana Campus – Academic Organizational Chart



EDWARD VIA COLLEGE OF OSTEOPATHIC MEDICINE

Louisiana Campus - Administrative Services and Support Organizational Chart



Orange indicates the administration/supervisors/directors/staff who are full-time on the Louisiana Campus and who report to their direct supervisor and to the Campus Dean

Maroon indicates vice presidents/vice provosts who travel to the Louisiana campus and communicate via Zoom regularly to meet with supervisors who work on campus to assure campus needs are met. These VPs are responsible to both the President or Provost and to the Campus Deans to assure all campus needs are met.